

GIZFAB

NISSAN MICRA K11 BRAKE CALIPER CONVERSION KIT FITTING GUIDE

*** DISCLAIMER ***

THIS KIT IS ONLY SUITABLE FOR DRUM AXLE BEAMS, THIS KIT WILL NOT WORK ON DISC AXLE BEAMS. HAVE A CORRECTLY SIZED MASTER CYLINDER INSTALLED. THIS KIT IS INTENDED TO BE USED FOR MOTORSPORT PURPOSES ON PRIVATE LAND IN A CONTROLLED ENVIRONMENT. FOR THE PURPOSE OF WARRANTY THIS KIT MUST BE INSTALLED BY A QUALIFIED TECHNICIAN AT A VAT REGISTERED BUSINESS

STEP 1 – REMOVE WHEEL BEARING, DRUM ASSEMBLY, BRAKE HOSES & HANDBRAKE CABLES.



STEP 2 – CLEAN THIS SECTION OF THE AXLE PIN



STEP 3 CONT – CUT AND REMOVE THIS BRACKET OFF THE AXLE



STEP 3 CONT - BRACKET REMOVE



STEP 4 – INSTALL CALIPER BRACKET



STEP 4 CONTINUED - TAKE CARE TO NOTICE THE ORIENTATION (PICTURED IS THE RIGHT HAND SIDE OF THE CAR - THE SIDE THE EXHAUST EXIST)



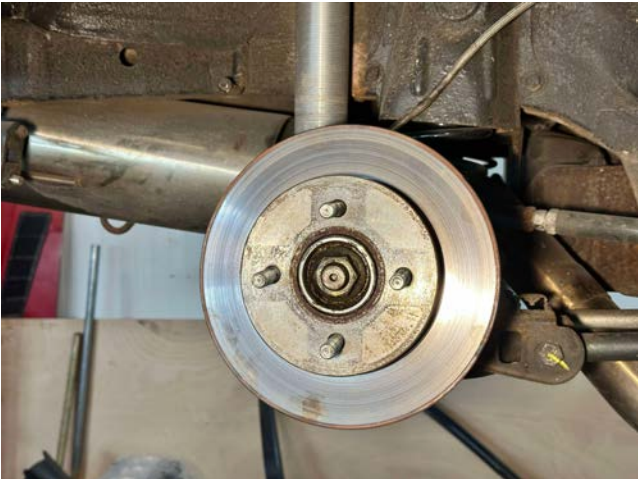
STEP 5 - INSTALL THE WHEEL BEARING



STEP 5 CONT – PENDING YOUR BRAND OF WHEEL BEARING, THE BEARING MAY FOUL THE 4 HUB ADAPTER BOLTS. THE SIZE OF THE WHEEL BEARING CASTING DIFFERS BETWEEN BRANDS. YOU MAY NEED TO GET CREATIVE TO GAIN SOME CLEARANCE.



STEP 6 INSTALL THE BRAKE DISC



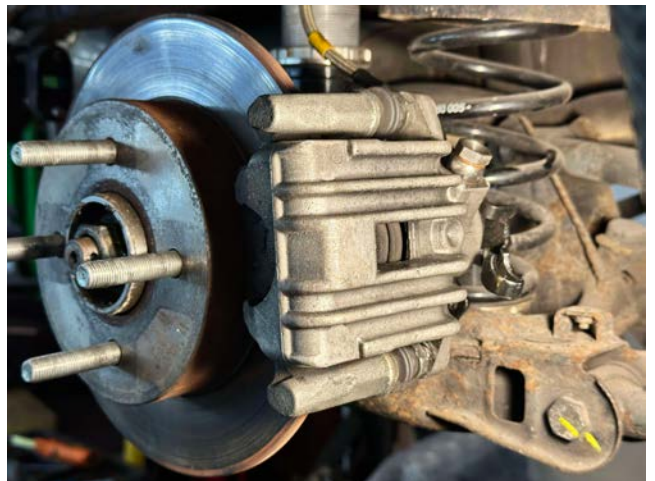
STEP 7 - INSTALL CALIPER CARRIER. THE CARRIERS ARE NOT HANDED AND CAN BE INSTALLED EITHER SIDE.



STEP 8 - INSTALL PADS INTO THE CARRIER



STEP 9 - INSTALL THE CALIPER
IMPORTANT - THE CALIPER ARE HANDED (LEFT AND RIGHT) YOU NEED TO INSTALL THE LEFT CALIPER ON THE RIGHT SIDE, AND THE RIGHT CALIPER ON THE LEFT SIDE



STEP 10 - INSTALL BRAKE HOSE
(HOSE & PIPE IS NOT IN THE PICTURE AS MY RACE CAR USES A DIFFERENT SETUP - BUT IT WILL ATTACH TO THIS BRACKET ON THE CHASSIS WITH A CIRCLIP AND THE METAL LINE WILL SCREW INTO IT



STEP 10 CONTINUED



STEP 11 - HANDBRAKE CABLE

THIS KIT WILL RE-USE THE OEM DRUM BRAKE CABLE WITH A MODIFICATION. FIRST CUT OFF THE CRIMP FITTING AT THE END OF THE CABLE WITH THE SPRING



STEP 11 CONTINUED - MEASURE EACH CABLE AND MARK IT END TO END

RIGHT HAND SIDE (EXHAUST SIDE) - 1430MM
LEFT HAND SIDE (FUEL FLAP SIDE) - 1385MM

CUT AND CRIMP A 3MM BALL END FITTING ONTO THE END OF THE CABLE



STEP 11 CONTINUED

STEP 11 CONTINUED



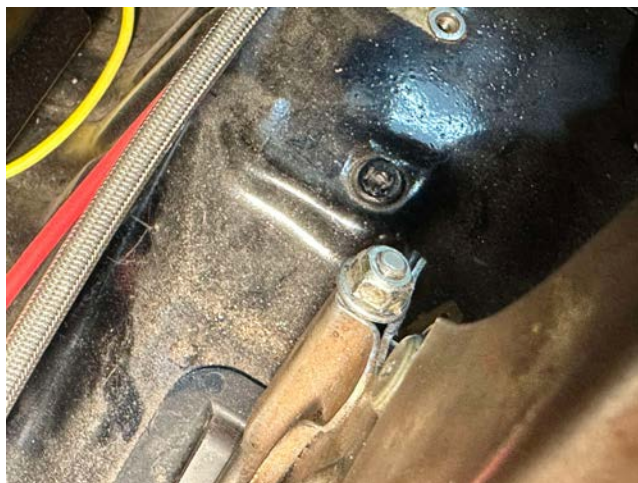
(IF WE FIND A SUPPLIER FOR THE CABLES, THEY WILL BE AVAILABLE TO PURCHASE AS PART OF THE KIT)

OTHERWISE MODIFY YOUR CABLES ARE YOUR OWN RISK AND TAKE CARE TO DOUBLE CHECK THE MEASUREMENTS SUGGESTED ABOVE ARE CORRECT BEFORE COMMITTING TO MODIFYING THE CABLES WE WILL NOT BE HELD RESPONSIBLE FOR MODIFICATION OF THE CABLES.

STEP 12 - INSTALL THE BRAKE CABLE
FIRST, ENSURE TO LOOSEN THIS NUT ON THE UNDERSIDE
OF THE HANDBRAKE CABLE UNTIL



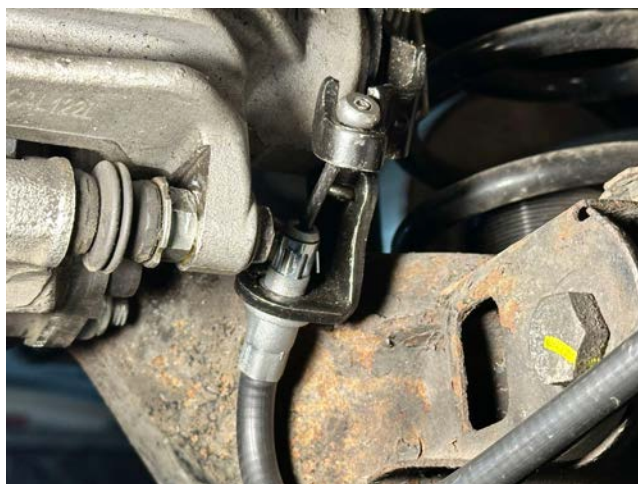
IT SHOULD LOOK LIKE THIS WHEN LOOSENED



STEP 13 - INSTALL THE HANDBRAKE CABLES



STEP 13 - CONTINUED



STEP 13 CONTINUED



STEP 14 - ADJUST HANDBRAKE CABLE BY RE-TIGHTENING
THE NUT ON THE UNDERSIDE OF THE HANDBRAKE CABLE.
ADJUST UNTIL YOU ARE HAPPY WITH THE FEEL OF THE
HANDBRAKE AND THE REAR WHEELS LOCK UP.



ENJOY YOUR NEW DISC CONVERSION!